

## Access to Higher Performing Schools Methodology

Access to higher performing schools is based on whether a development is located in an area that meets at least two out of three school performance assessments:

- Share of 3<sup>rd</sup> graders who are reading proficient - 2014/2015 school year -Need to meet or exceed the statewide rate of 58.7%<sup>1</sup>
- Share of 8<sup>th</sup> graders who are math proficient - 2014/2015 school year -Need to meet or exceed the statewide rate of 57.8%<sup>1</sup>
- Share of high school students that graduate on time - 2013/2014\* school year -Need to meet or exceed the statewide rate of 81.17%<sup>2</sup>

Applicants can receive 4 points if the development is located in an area considered to have access to higher performing schools. The same regions eligible for economic integration points are also eligible for access to higher performing school points. This includes the 7-county Twin Cities metropolitan area, along with areas in and around Duluth, Rochester, and Saint Cloud.

Each elementary school, middle school<sup>3</sup>, and high school attendance boundary are assessed separately and then combined for a final score. If a school is equal to or greater than the statewide average, it meets that performance threshold for that measure. If at least two of the three measurements achieve the performance threshold, the area is eligible for points.

Access to higher performing schools is based on elementary attendance boundaries<sup>4</sup>. Points for 8<sup>th</sup> grade math proficiency and high school graduation rate are assigned to the elementary school that feeds into those middle and high schools. Private, charter, and magnet schools are excluded from this analysis.

***\*Minnesota Department of Education has not released 2014/2015 graduation rates. Minnesota Housing will update with 2014/2015 data upon its release if prior to final publication of the Qualified Allocation Plan on April 28, 2016, adding any areas that become eligible with the new data and subtracting areas that no longer qualify.***

This document includes maps of the areas eligible for points given their access to higher performing schools. Interactive tools will be made available for applicants and staff to map project locations and

---

<sup>1</sup> Based on Minnesota Comprehensive Assessments (MCA) Series III test scores by school for 2014/2015 school year – 3<sup>rd</sup> and 8<sup>th</sup> grade proficiency. Data source: <http://w20.education.state.mn.us/MDEAnalytics/Data.jsp>.

<sup>2</sup> Based on 4-year graduation rates by school for 2013/2014 school year. Data source: <http://w20.education.state.mn.us/MDEAnalytics/Data.jsp>.

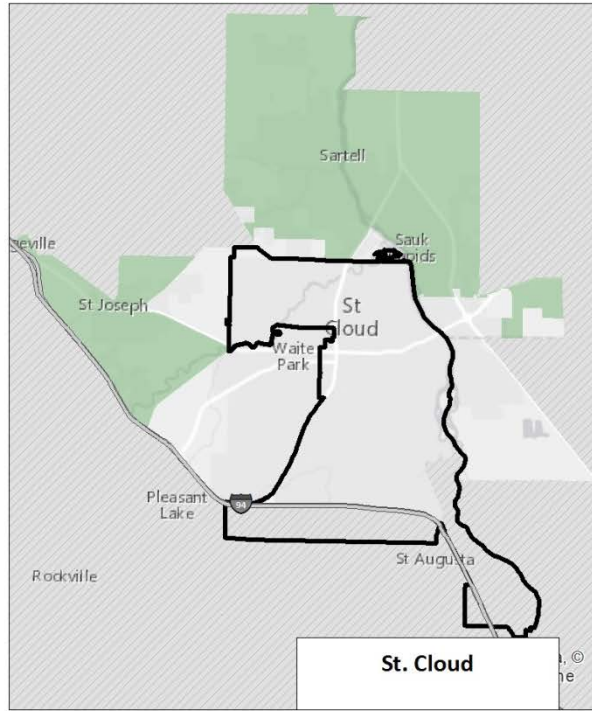
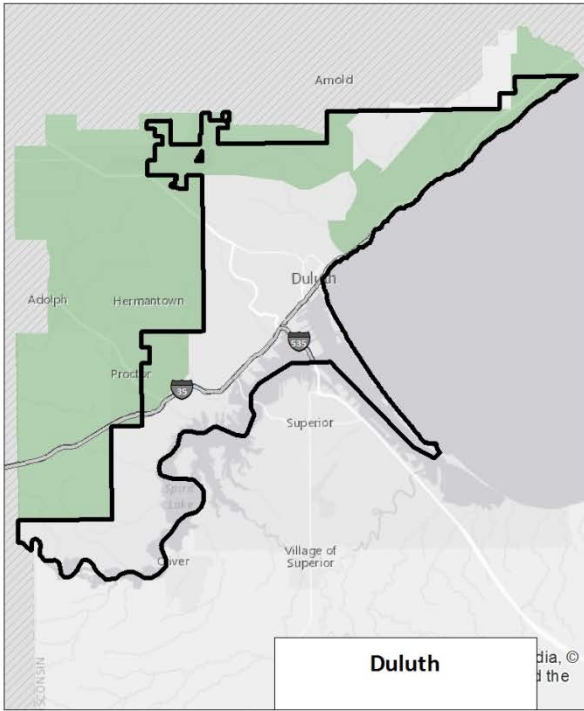
<sup>3</sup> If a middle school attendance boundary is not defined or a middle school does not exist, the high school attendance boundary is used.

<sup>4</sup> Data source Minnesota Department of Education via the Minnesota Geospatial Commons: <https://gisdata.mn.gov/organization/us-mn-state-mde>.

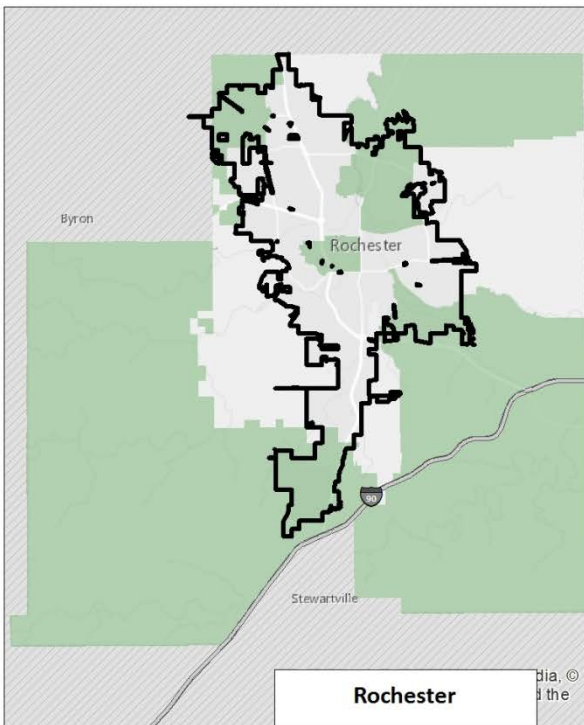
determine the high-performing school points through the community profiles at [www.mnhousing.gov](http://www.mnhousing.gov) > Policy & Research > Community Profiles.

Areas outside the 7-county Twin Cities metropolitan area, Duluth, Rochester, and St. Cloud are not eligible for school performance or economic integration points, but they are eligible for 10 points under the Rural/Tribal Designated Areas.

Board Agenda Item: 7.D  
Access to Higher Performing Schools Methodology



Access to Higher Performing Schools (4 Points)



Board Agenda Item: 7.D  
Access to Higher Performing Schools Methodology

